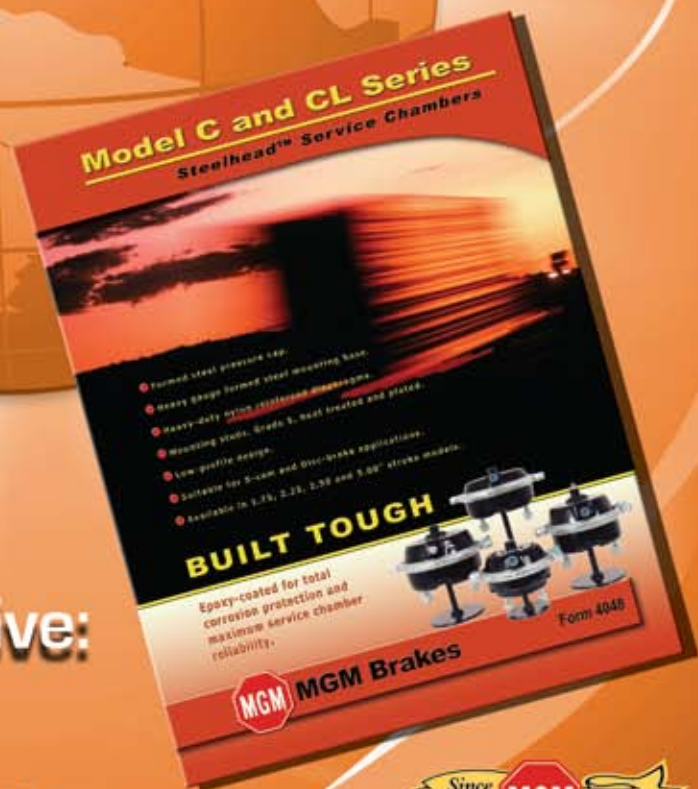


"C" SERIES SERVICE CHAMBERS



**Tough, Cost-Effective:
A Stopping Force
Within The Industry**





		Page(s)
Section 5: Service Chambers.....		66-75
Standard Stroke Model		
C	Service Chambers.....	68-69
Long Stroke Models		
CL	Service Chambers, Long Stroke.....	70-71
CS	Service Chambers, Long Stroke, Sealed.....	72-73
Wedge Model		
CW	Service Chambers, Wedge.....	74-75



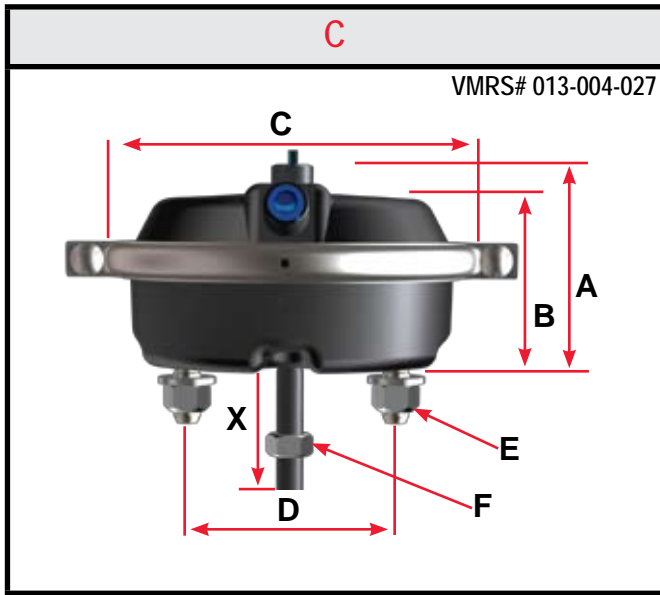
FEATURES	C	CW	CL, CS
Formed Steel Pressure Cap/Epoxy Coated			
Heavy-Duty Nylon-Reinforced Diaphragms			
Heavy-Duty Steel Non-Pressure Chamber			
Stroke Alert			
Top / Side Air Ports			

■ Indicates Feature

- For air disc applications, refer to section 7.

NOTE: Product information and specifications subject to change without notice.

Standard Stroke Model



C Model Features

- Formed Steel Pressure Cap - Epoxy-Coated
- Formed Steel Non-Pressure Chamber - Epoxy-Coated
- Heavy-Duty Nylon Reinforced Diaphragms
- Top and Side Air Ports - 3/8" NPTF
- Center Hole Shield (Type 30 only)

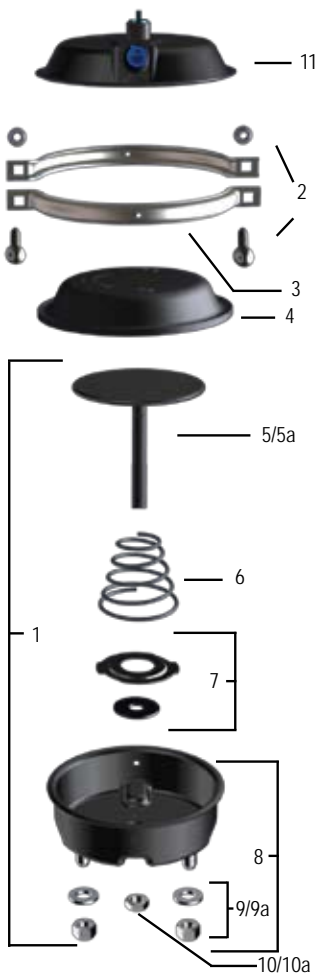
P/N Series	1412	1416	1420	1427	1430	1436
Model	C12	C16	C20	C24L	C30	C36
Size	12	16	20	24	30	36
Stroke	1.75" (44.5 mm)	2.25" (57.2 mm)	2.25" (57.2 mm)	2.50" (63.5 mm)	2.50" (63.5 mm)	3.00" (76.2 mm)
Part Number SAE	1412001	1416001	1420001	1427001	1430001	1436001
Part Number METRIC	N/A	N/A	1420202	1427202	1430202	1436202
Wt. lb (kg)	3.80 lb (1.7 kg)	5.90 lb (2.7 kg)	7.55 lb (3.4 kg)	8.40 lb (3.8 kg)	10.12 lb (4.6 kg)	15.88 lb (7.2 kg)
A	3.84" (97.5 mm)	4.43" (112.5 mm)	4.16" (105.7 mm)	4.42" (112.3 mm)	4.43" (112.5 mm)	5.12" (130.0 mm)
B	3.13" (79.5 mm)	3.64" (161.0 mm)	3.41" (86.6 mm)	3.67" (93.2 mm)	3.69" (93.7 mm)	4.52" (114.8 mm)
C	5.69" (144.5 mm)	6.59" (167.4 mm)	6.92" (175.8 mm)	7.34" (186.4 mm)	8.19" (208.0 mm)	9.25" (235.0 mm)
D	3.00" (76.2 mm)	3.00" (76.2 mm)	4.75" (120.7 mm)	4.75" (120.7 mm)	4.75" (120.7 mm)	4.75" (120.7 mm)
E	7/16" - 14 UNC		5/8" - 11 UNC (M16 x 1.5 - 6g)			
F	1/2" - 20 UNF		5/8" - 18 UNF (M16 x 1.5 - 6g)			
Inlets	3/8" - 18 NPTF		3/8" - 18 NPTF (M16 x 1.5 - 6H)			
X - Min.	4.00" (101.6 mm)		8.00" (203.2 mm)			

• For actuators manufactured with neoprene diaphragms, refer to Section 9.

NOTE: Product information and specifications subject to change without notice.

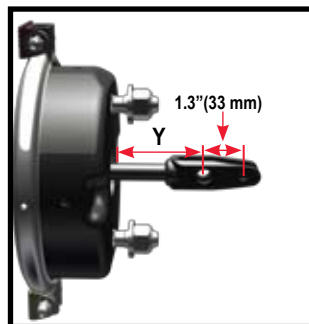
Replacement Parts							
P/N Series	1412	1416	1420	1427	1430	1436	
Model	C12	C16	C20	C24L	C30	C36	
1	Kit - NP Chamber (b)	9015207	9015136	9015046	9015117	9015050	9015049
2	Kit - Nuts & Bolts	9003002	9003001	9003001	9003001	9003001	9003001
3	Clamp Band Assembly	8216012	8216018	8216020	8216025	8216045	8216036
4	Diaphragm	8017112	8017116	8017120	8017141	8017730	8017836
5	Kit - Push-Rod Assembly (b) SAE	9064018	9064019	9064001	9064002	9064003	9064004
5a	Kit - Push-Rod Assembly (b) METRIC	N/A	N/A	9064015	9064016	9064035	9064009
6	Return Spring	8068007	8068008	8068002	8068002	8068002	8068012
7	Kit - Center Hole Shield	N/A	N/A	N/A	N/A	9065002	N/A
8	NP Chamber Assembly (b)	8215142	8215023	8215169	8215105	8215501	8215036
9	Kit - Nuts & Washers SAE	9002003	9002003	9002001	9002001	9002001	9002001
9a	Kit - Nuts & Washers METRIC	N/A	N/A	9002002	9002002	9002002	9002002
10	Hex Nut - Yoke SAE	8130011	8130011	8130004	8130004	8130004	8130004
10a	Hex Nut - Yoke METRIC	N/A	N/A	8130016	8130016	8130016	8130016
11	Pressure Cap (2-inlets/steel)	8010066(a)	8210013	8210010	8210002	8210003	8010009
OPTIONAL ITEMS - For additional replacement parts, refer to Section 11.							
Yoke Assembly		Refer to Replacement Parts Section 11					
Boot & Retainer		Refer to Replacement Parts Section 11					

NOTE: (a) Type 12 pressure cap is cast aluminum.
 (b) To ensure correct stroke alert positioning, these kits must be used only on the designated MGM Brake units.



Center Hole Shield

Permits visual inspection of stroke alert but prevents entry of contaminants.



NOTE: Type 24 and 30 units equipped with welded-yoke and 2.25" (57.2 mm) Y- dimension are replaced by part number:

1427901 (C24L)
 1430901 (C30)

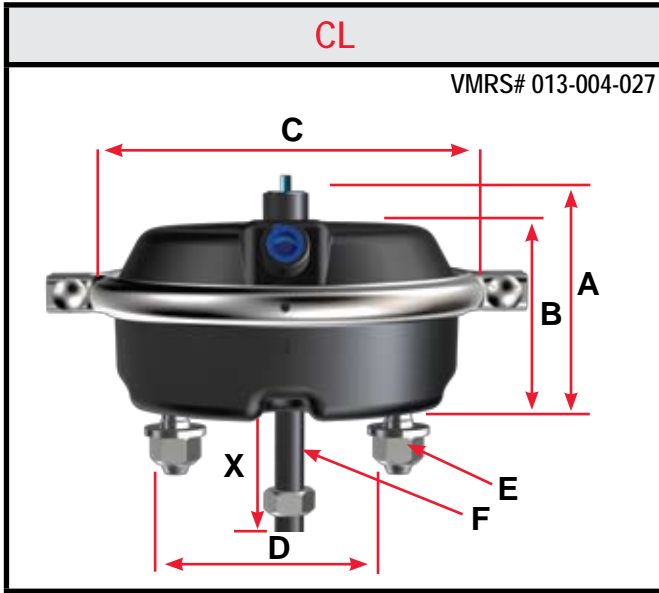
NOTE: 3.0625" (77.8 mm) and 4.2" (106.7 mm) Y-dimensions also available. Contact customer service for more information.

Refer to Section 11 for replacement parts.

NOTE: Product information and specifications subject to change without notice.

Long Stroke Models

CL Model Features



- Formed Steel Pressure Cap - Epoxy-Coated
- Formed Steel Non-Pressure Chamber - Epoxy-Coated
- Heavy-Duty Nylon Reinforced Diaphragms
- Top and Side Air Ports - 3/8" NPTF
- Center Hole Shield

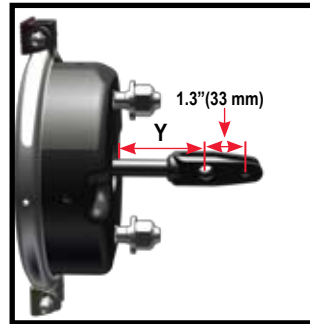
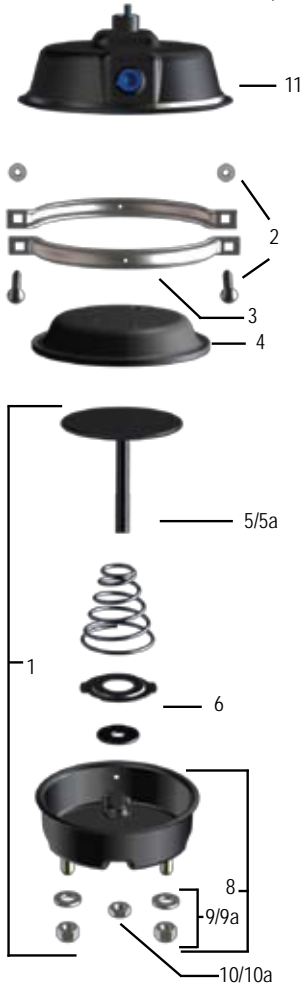
P/N Series	1418	1421	1428	1431
Model	C16L2.5	C20L	C24L3	C30L3
Size	16	20	24	30
Stroke	2.50" (63.5 mm)	2.50" (63.5 mm)	3.00" (76.2 mm)	3.00" (76.2 mm)
Part Number SAE	1418001	1421001	1428001	1431001
Part Number METRIC	N/A	1421202	1428202	1431202
Wt. lb (kg)	5.9 lb (2.7 kg)	7.65 lb (3.5 kg)	9.28 lb (4.2 kg)	10.55 lb (4.8 kg)
A	4.53" (115.1 mm)	4.40" (111.8 mm)	5.30" (134.6 mm)	5.31" (134.9 mm)
B	3.78" (96.0 mm)	3.67" (93.2 mm)	4.28" (108.7 mm)	4.30" (109.2 mm)
C	6.59" (167.4 mm)	6.85" (174.0 mm)	7.37" (187.2 mm)	8.24" (209.3 mm)
D	3.00" (76.2 mm)	4.75" (120.7 mm)	4.75" (120.7 mm)	4.75" (120.7 mm)
E	7/16" - 14 UNC	5/8" - 11 UNC (M16 x 1.5 - 6g)		
F	1/2" - 20 UNF	5/8" - 18 UNF (M16 x 1.5 - 6g)		
Inlets	3/8" - NPTF	3/8" - 18 NPTF (M16 x 1.5 - 6H)		
X - Min.	4.00" (101.6 mm)	8.00" (203.2 mm)		

• For actuators manufactured with neoprene diaphragms, refer to Section 9.

NOTE: Product information and specifications subject to change without notice.

Replacement Parts					
P/N Series		1418	1421	1428	1431
Model		C16L	C20L	C24L3	C30L3
1	Kit - NP Chamber (a)	9015205	9015233	9015200	9015201
2	Kit - Nuts & Bolts	9003001	9003001	9003001	9003001
3	Clamp Band Assembly	8216018	8216020	8216025	8216045
4	Diaphragm	8017216	8017220	8017924	8017830
5	Kit - Push-Rod Assembly (a) SAE	9064022	9064020	9064006	9064008
5a	Kit - Push-Rod Assembly (a) METRIC	N/A	9064015	9064027	9064028
6	Return Spring	8068008	8068002	8068012	8068012
7	Kit - Center Hole Shield	N/A	N/A	N/A	9065002
8	NP Chamber Assembly (a)	8215023	8215169	8215200	8215501
9	Kit - Nuts & Washers SAE	9002003	9002001	9002001	9002001
9a	Kit - Nuts & Washers METRIC	N/A	9002002	9002002	9002002
10	Hex Nut - Yoke SAE	8130011	8130004	8130004	8130004
10a	Hex Nut - Yoke METRIC	N/A	8130016	8130016	8130016
11	Pressure Cap (2-inlet/steel)	8210020	8210022	8210026	8210024
OPTIONAL ITEMS - For additional replacement parts, refer to Section 11.					
Yoke Assembly		Refer to Replacement Parts Section 11			
Boot & Retainer		Refer to Replacement Parts Section 11			

NOTE: (a) To ensure correct stroke alert positioning, these kits must be used only on the designated MGM Brake units. All CS models are sealed assemblies, non-serviceable, therefore kits are not available.



NOTE: Type 24 and 30 units equipped with welded-yoke and 2.25" (57.2 mm) Y dimension are replaced by part number:

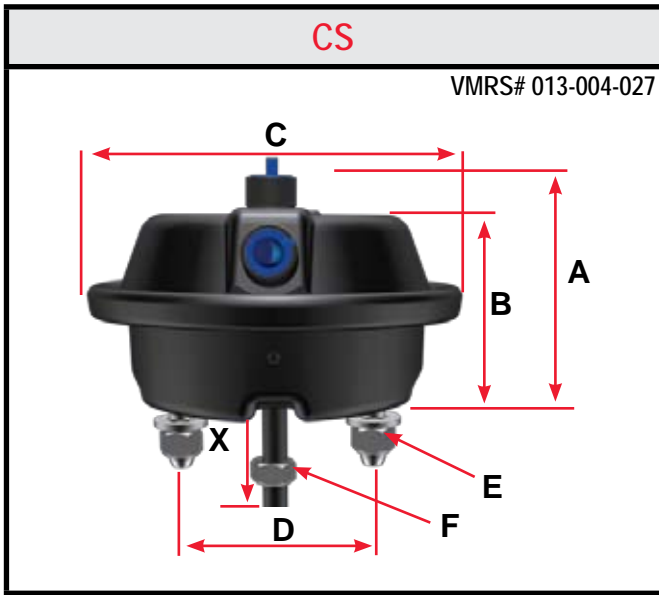
- 1428901 (C24L3)
- 1431901 (C30L3)

NOTE: 3.0625" (77.8 mm) and 4.2" (106.7 mm) Y-dimensions also available. Contact customer service for more information.

Refer to Section 11 for replacement parts.

NOTE: Product information and specifications subject to change without notice.

Long Stroke Models



CS Model Features

- Formed Steel Pressure Cap - Epoxy-Coated (CS20 Models have Zinc Iron Chromate Coating)
- Formed Steel Non-Pressure Chamber - Epoxy-Coated
- Heavy-Duty Nylon Reinforced Diaphragms
- Top and Side Air Ports - 3/8" NPTF
- Center Hole Shield

P/N Series	1617	1621	1623	1627
Model	CS16LH	CS20L	CS20L3	CS24L
Size	16	20	20	24
Stroke	2.50" (63.5 mm)	2.50" (63.5 mm)	3.00" (76.2 mm)	2.50" (63.5 mm)
Part Number SAE	1617001	1621001	1623001	1627001
Part Number METRIC	1617002	1621002	1623002	1627202
Wt. lb (kg)	6.62 lb (3.0 kg)	6.80 lb (3.1 kg)	9.23 lb (4.2 kg)	8.66 lb (3.9 kg)
A	4.37" (111.0 mm)	4.37" (111.0 mm)	5.14" (130.6 mm)	4.37" (111.0 mm)
B	3.74" (95.0 mm)	3.74" (95.0 mm)	4.41" (112.0 mm)	3.63" (92.3 mm)
C	7.00" (177.8 mm)	7.00" (177.8 mm)	7.02" (178.3 mm)	7.31" (185.7 mm)
D	4.75" (120.7 mm)	4.75" (120.7 mm)	4.75" (120.7 mm)	4.75" (120.7mm)
E	5/8" - 11 UNC (M16 x 1.5 - 6g)			
F	5/8" - 18 UNF (M16 x 1.5 - 6g)			
Inlets	3/8" - 18 NPTF (M16 x 1.5 - 6H)			
X - Min.	8.00" (203.2 mm)			

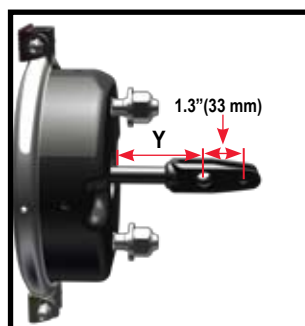
P/N Series	1628	1630	1631	1640
Model	CS24L3	CS30	CS30L3	CS24LW
Size	24	30	30	24
Stroke	3.00" (76.2 mm)	2.50" (63.5 mm)	3.00" (76.2 mm)	2.50" (63.5 mm)
Part Number SAE	1628001	1630001	1631001	1640001
Part Number METRIC	1628202	1630202	1631202	1640202
Wt. lb (kg)	9.28 lb (4.2 kg)	9.88 lb (4.5 kg)	10.55 lb (4.8 kg)	8.66 lb (3.9 kg)
A	5.30" (134.6 mm)	4.39" (111.5 m)	5.31" (134.9 mm)	4.37" (111.0 mm)
B	4.28" (108.7 mm)	3.67" (93.2 mm)	4.30" (109.2 mm)	3.63" (92.3 mm)
C	7.37" (187.2 mm)	8.18" (207.8 mm)	8.24" (209.3 mm)	7.31" (185.7 mm)
D	4.75" (120.7 mm)	4.75" (120.7 mm)	4.75" (120.7 mm)	4.75" (120.7mm)
E	5/8" - 11 UNC (M16 x 1.5 - 6g)			
F	5/8" - 18 UNF (M16 x 1.5 - 6g)			
Inlets	3/8" - 18 NPTF (M16 x 1.5 - 6H)			
X - Min.	8.00" (203.2 mm)			

• For actuators manufactured with neoprene diaphragms, refer to Section 9.

NOTE: Product information and specifications subject to change without notice.

Replacement Parts									
P/N Series	1617	1621	1623	1627	1628	1630	1631	1640	
Model	CS16LH	CS20L	CS20L3	CS24L	CS24L3	CS30	CS30L3	CS24LW	
1	Kit - NP Chamber (a)	N/A	N/A	N/A	N/A	N/A	N/A	N/A	N/A
2	Kit - Nuts & Bolts	N/A	N/A	N/A	N/A	N/A	N/A	N/A	N/A
3	Clamp Band Assembly	N/A	N/A	N/A	N/A	N/A	N/A	N/A	N/A
4	Diaphragm	N/A	N/A	N/A	N/A	N/A	N/A	N/A	N/A
5	Kit - Push-Rod Assembly (a) SAE	N/A	N/A	N/A	N/A	N/A	N/A	N/A	N/A
5a	Kit - Push-Rod Assembly (a) METRIC	N/A	N/A	N/A	N/A	N/A	N/A	N/A	N/A
6	Return Spring	N/A	N/A	N/A	N/A	N/A	N/A	N/A	N/A
7	Kit - Center Hole Shield	N/A	N/A	N/A	N/A	N/A	N/A	N/A	N/A
8	NP Chamber Assembly (a)	N/A	N/A	N/A	N/A	N/A	N/A	N/A	N/A
9	Kit - Nuts & Washers SAE	9002001	9002001	9002001	9002001	9002001	9002001	9002001	9002001
9a	Kit - Nuts & Washers METRIC	9002002	9002002	9002002	9002002	9002002	9002002	9002002	9002002
10	Hex Nut - Yoke SAE	8130004	8130004	8130004	8130004	8130004	8130004	8130004	8130004
10a	Hex Nut - Yoke METRIC	8130016	8130016	8130016	8130016	8130016	8130016	8130016	8130016
11	Pressure Cap (2-inlet/steel)	N/A	N/A	N/A	N/A	N/A	N/A	N/A	N/A
OPTIONAL ITEMS - For additional replacement parts, refer to Section 11.									
Yoke Assembly		Refer to Replacement Parts Section 11							
Boot & Retainer		Refer to Replacement Parts Section 11							

• All CS models are sealed assemblies, non-serviceable, therefore replacement kits are not available.



NOTE: Type 16, 20, 24 and 30 units equipped with welded-yoke and 2.25" (57.2 mm) Y dimension are replaced by part number:

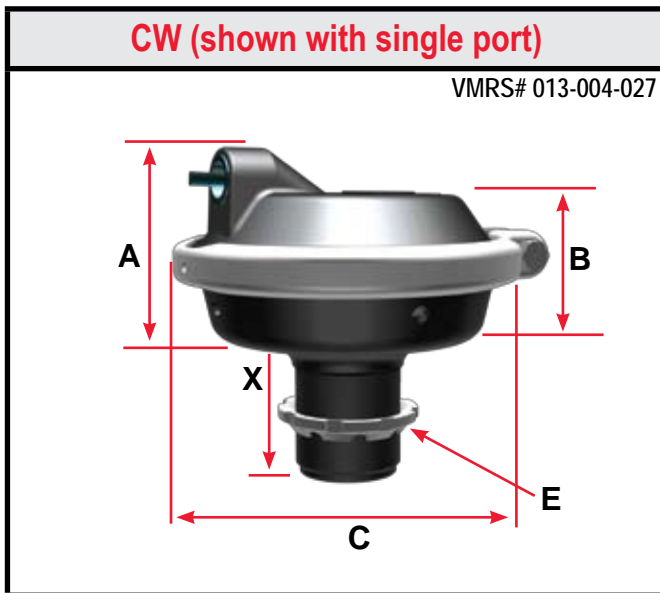
- 1617901 (CS16LH)
- 1621901 (CS20L)
- 1628901 (CS24L3)
- 1630901 (CS30)
- 1631901 (CS30L3)

NOTE: 3.0625" (77.8 mm) and 4.2" (106.7 mm) Y-dimensions also available. Contact customer service for more information.

Refer to Section 11 for replacement parts.

NOTE: Product information and specifications subject to change without notice.

Standard Stroke Model



NOTE: X - Dimension of mounting tube is measured from bottom flat on non-pressure chamber to tube end.

CW Model Features

- Formed Steel Non-Pressure Chamber - Epoxy-Coated
- Heavy-Duty Nylon Reinforced Diaphragms
- Top and Side Air Ports - 3/8" NPTF

Wedge Piston Assembly
ArvinMeritor Bendix



Ordering: Determine if foundation brake is ArvinMeritor or Bendix type by comparison to piston assembly photos above.

P/N Series	1009	1012	1016
Model	CW9	CW12	CW16
Size	9	12	16
Stroke	1.75" (44.5 mm)	1.75" (44.5 mm)	1.75" (44.5 mm)
Wt. (lb/kg)*	3.53 lb (1.6 kg)	3.81 lb (1.7 kg)	4.90 lb. (2.2 kg)
A	2.97" (75.4 mm)	3.10" (78.7 mm)	2.85" (72.4 mm)
B	2.42" (61.5 mm)	2.39" (60.7 mm)	2.62" (66.5 mm)
C	5.25" (133.4 mm)	5.69" (144.5 mm)	6.59" (167.4 mm)
E	1 3/4" - 12 UN-2A	1 3/4" - 12 UN-2A	1 3/4" - 12 UN-2A
Inlets	3/8" - 18 NPTF	3/8" - 18 NPTF	3/8" - 18 NPTF

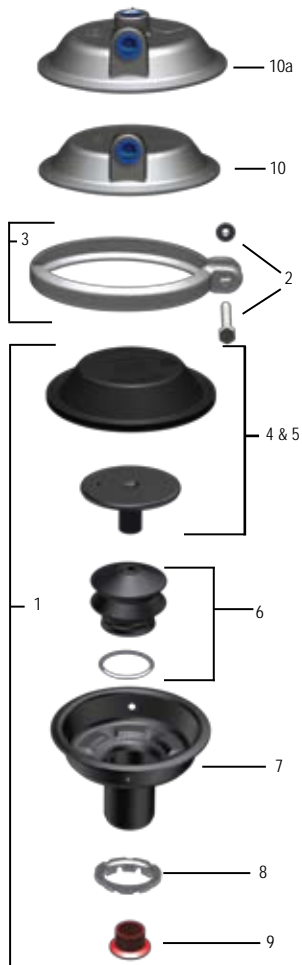
NOTE: * Weight will vary in relation to tube length.

CW Service Brake Chamber						
Size	Type 9		Type 12		Type 16	
Stroke	1.75" (44.5 mm)		1.75" (44.5 mm)		1.75" (44.5 mm)	
"X" DIM	ArvinMeritor	Bendix	ArvinMeritor	Bendix	ArvinMeritor	Bendix
2.25" (57.2 mm)	1009018	1009012	1012008	1012009	1016004	1016001
2.85" (72.4 mm)	1009023	1009020	1012001	1012004	1016003	1016005
3.75" (95.3 mm)	*	*	*	1012097	*	1016019
4.10" (104.1 mm)	1009032	1009021	1012002	1012048	1016006	*
4.56" (115.8 mm)	*	*	1012066	*	*	*
6.10" (154.9 mm)	1009053	1009022	1012057	1012049	1016017	*
7.56" (192.0 mm)	*	*	1012058	*	*	*
8.75" (222.3 mm)	1009049	*	1012007	*	*	*
10.19" (258.8 mm)	*	*	1012003	1012006	1016020	*
12.00" (304.8 mm)	*	*	1012096	*	1016011	*
14.00" (355.6mm)	*	*	1012056	1012052	*	*

NOTE: (*) This chamber version is not available

NOTE: Product information and specifications subject to change without notice.

CW Chamber Service Kits						
Size	Type 9		Type 12		Type 16	
Stroke	1.75" (44.5 mm)		1.75" (44.5 mm)		1.75" (44.5 mm)	
"X" DIM	ArvinMeritor	Bendix	ArvinMeritor	Bendix	ArvinMeritor	Bendix
2.25" (57.2 mm)	9015040	9015001	9015003	9015002	*	*
2.85" (72.4 mm)	9015005	9015004	9015007	9015006	9015044	9015043
3.75" (95.3 mm)	*	*	*	9015134	*	9015095
4.10" (104.1 mm)	9015009	9015008	9015011	9015010	9015059	*
6.10" (154.9 mm)	*	*	9015019	9015018	9015096	*
7.56" (192.0 mm)	*	*	9015045	*	9015092	*
8.75" (222.3 mm)	9015063	*	9015022	*	*	*
10.19" (258.8 mm)	*	*	9015026	*	*	*
12.00" (304.8 mm)	*	*	9015102	*	9015094	*
14.00" (355.6mm)	*	*	9015031	*	*	*



Replacement Parts				
P/N Series		1009	1012	1016
Model		CW9	CW12	CW16
1	Kit - NP Chamber	Refer to wedge chamber service kits above		
2	Kit - Nuts & Bolts	9003002	9003002	9003001
3	Clamp Band Assembly	8216009	8216012	8216018
4	Diaphragm	(a)	(a)	(a)
5	Kit - Push-Rod Assembly	(a)	(a)	(a)
6	Kit- Wedge Boot	9004005	9004005	9004005
7	NP Chamber Assembly	(a)	(a)	(a)
8	Spanner Nut	8034001	8034001	8034001
9	Wedge Guide - ArvinMeritor	8024006	8024006	8024006
10	Pressure Cap (1 Inlet)	N/A	8010040	8210001
10a	Pressure Cap (2 Inlets)	8010028	8010066	8210013

NOTE: (a) Diaphragm is glued to push-rod plate, therefore diaphragm and push-rod assembly are available only as part of item 1 kit.

• For additional replacement parts, refer to Section 11.

NOTE: Product information and specifications subject to change without notice.